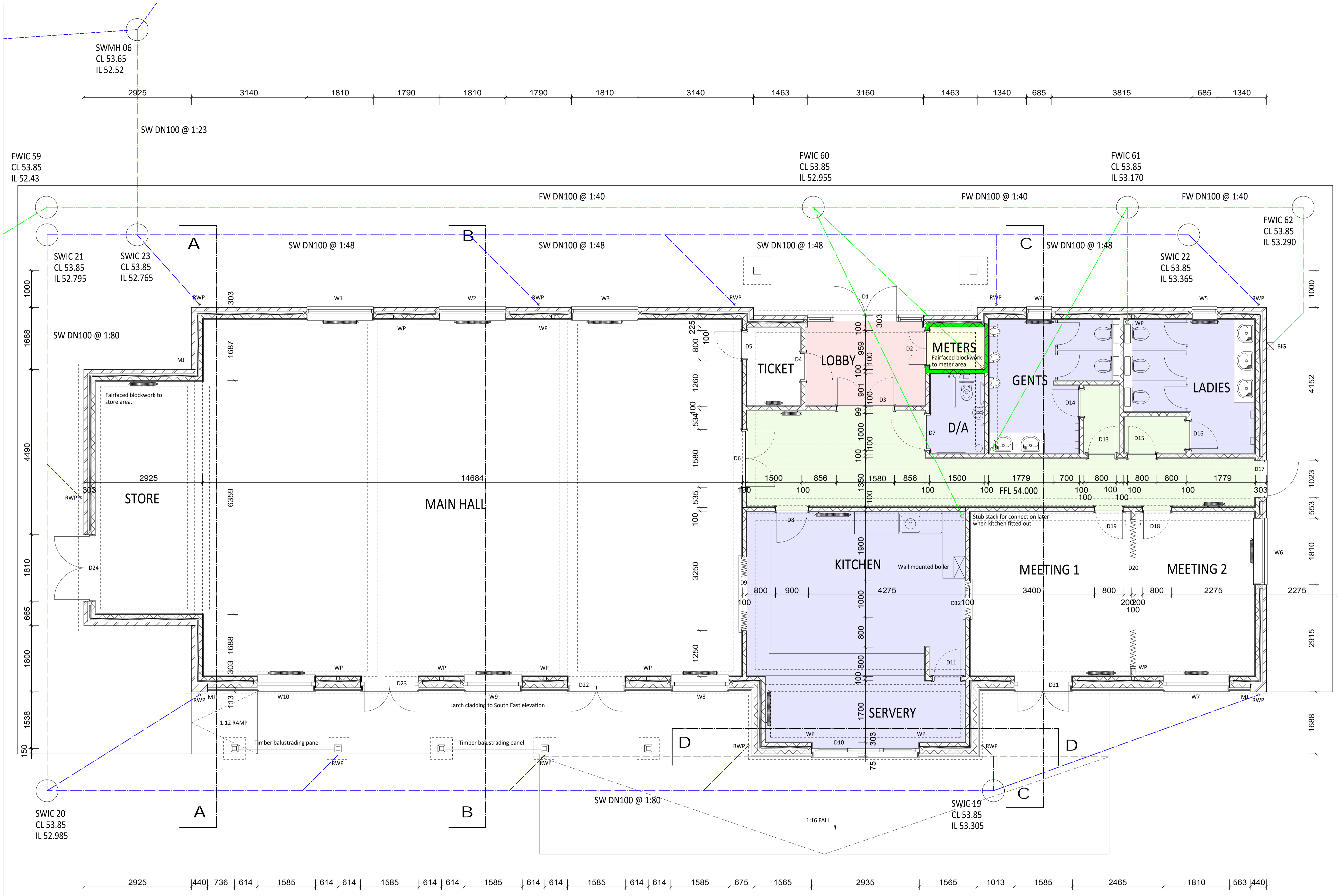


REV	DATE
A	09/01/18
B	22/03/18
C	15/05/18
D	08/11/18



- WATCO CONCRETE SEALER WATER BASED
- CARPET TILES @ £16/m<sup>2</sup>
- ALTRO NUVOLA STRATUS RUBBER TILES
- ALTRO WALKWAY 20 SAFETY FLOOR VINYL
- 17mm THICK RECESSED JAYMART 'GRIME-GRABBER' ALUMINIUM ENTRANCE MAT WITH BRUSH INSERTS



CLIENT  
DUCHY HOMES LTD

PROJECT  
ALPRAHAM VILLAGE HALL

DRAWING  
PLAN AS PROPOSED

DRAWING NUMBER	REV
1135-001	D
SCALE @ A1	DATE
1:50	OCT 2017
AUTHOR	STATUS
RB	CONTRACT

SPORTS FACILITIES DESIGNERS  
CHARTERED ARCHITECTS  
PROJECT MANAGERS

**CLUB DESIGN LTD**

Silverlea, Wyche Lane, Bunbury, Cheshire, CW6 9PD  
Tel: 01706 632600 Fax: 01829 261393  
E-mail: name@clubdesign.net  
Web: www.clubdesign.net

1. DRAINAGE: New drains to be 100mm dia. plastic drain pipes laid to manufacturer's recommendations regarding jointing & backfilling. Gullies to be Hepworth access type. All drainage to comply with CP301 & Local Authority requirements.
2. FOUNDATIONS: To Structural Engineer's design. See drawing Y17140 A1/100.
3. DPC'S: Provide vertical and horizontal flexible DPC's to all external openings. Horizontal dpc's to be Hyload, or similarly BBA certified, positioned in external wall minimum 150mm above adjacent ground level and with min 150mm laps. Thermabate insulated cavity closer dpc to window & door reveals. Weepholes to be provided at max 450mm c/s with at least two weepholes per opening.
4. FLOOR CONSTRUCTION: Floor finish on 75mm sand cement screed on 75mm Xtratherm Safe-R insulation on 100mm universal damp proof membrane on 150mm deep Collier & Henry beam and block N150T B. W150T series system. Floor to achieve a U-Value of 0.26w/m<sup>2</sup>k.
5. WALLS: 302.5mm thick cavity wall made up of 100mm 7N/mm<sup>2</sup> blockwork 100mm cavity with 50mm Kingspan Kooltherm K8 partial fill cavity wall insulation 102.5mm facing brickwork or 7N/mm<sup>2</sup> blockwork with cedar cladding 0.26W/m<sup>2</sup>k U value. Wall ties to be BS DD140 Type 4 at 250mm long stainless steel ties fixed at 450mm cts vertically & 600mm centres staggered horizontally. Ties to be at 300mm c/s within 225mm of openings. Above Ground mortar to be 1:1:6 natural mortar.
6. ROOF CONSTRUCTION: Marley Modern concrete roof tiles in anthracite on 38x25 timber battens on Tyvek breather membrane on trussed rafters 450mm centres. Trussed rafters designed including bracing by specialist trussed rafter manufacturer in accordance with BS5268 part 3.
7. LINTOLS, STRAPS & STEELWORK: All internal lintols to be precast concrete lintols as specified by the Engineer. Lintols to cavity wall to be as specified by the Engineer. Trussed rafter restraint straps at ceiling level to be as specified by the Engineer. Wallplate straps to be BAT standard straps 1250mm girth 30x2.5mm at 1200mm cts.
8. DOORS: External doors to be UPVC double glazed sliding and timber swing doors to achieve U-Value of 1.6w/m<sup>2</sup>k. Internal doors to be plywood faced flush solid core doors for painting in softwood frames complete with architraves and ironmongery.
9. ABOVE GROUND DRAINAGE: As detailed and specified by the MBE Engineer. Gutters and downpipes to be Marley Classic with 68mm downpipes in accordance with BS EN 607: 2004 & BS EN 1462:2004. SVP ducts to be lined with 2 layers 12.5mm plasterboard.
10. INTERNAL PARTITIONS: All internal partitions to be 100mm blockwork except where noted. Fairfaced blockwork is highlighted in green. Services chased into block walls must not impair stability or durability of masonry structure. Services chased into block walls must not be placed back to back.
11. GLAZING & WINDOWS: Windows to be UPVC frames in white with 4.20.4 double glazed units 'K' Argon filled sealed units to BBA/BS5713 (Kite Marked inc corrugated metal spacer with soft coat low E Pilkington Optitherm SN inner pane. U-value of 1.6w/m<sup>2</sup>k.
12. FIRE SAFETY: All elements of structure to be a minimum of 1 hour fire resistance. Provide smoke and heat detection in accordance with the MBE Engineers details. Emergency exit signage should be designed and installed in accordance with BS 5499 pt 1: 1990, pt 3: 1990, & pt 4: 2000.
13. VENTILATION: See MBE Engineers drawings for details of ventilation to be provided.
14. ELECTRICAL SAFETY: All electrical works shall comply with the current issue of the Regulations for Electrical Installations' issued by the IEE and conform to BS 7671. Electrical works to be carried out by a NIC EIC approved contractor and a registered member of ECA, who shall test and certify the installation, to satisfy the requirements of AD.P. Fire alarm installation, testing and commissioning to be in accordance with BS 5839-6 and smoke detectors to meet BS 5446-1 and be kitemark certified.
15. PART G: Mixer/blender valves on all basin taps to ensure the temperature of water leaving the tap outlet does not exceed 48°C.
17. LIGHTING (B DEDICATED ENERGY EFFICIENCY): All work to comply with IEE Regulations latest edition and Building Regulations Approved Document Part L1. At least 75% energy efficient light fittings to be installed, CFL fittings with a luminous efficacy of greater than 40 lumens per circuit watt.
18. SWITCH POSITIONS: Height of sockets and switches between 450mm and 1200mm from FFL.